

City of CREVE COEUR Newsletter

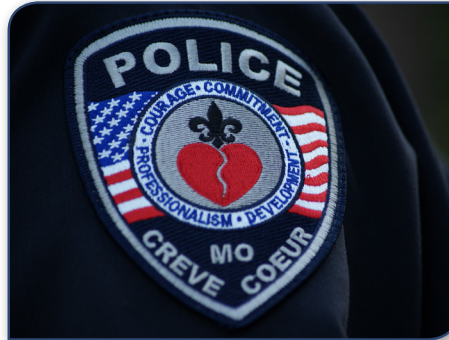
the heart of community & commerce



August 2016

New Police Facility Would Improve Safety, Efficiency

City Council is currently considering placing a bond issue on the November 2016 ballot to provide funding for a new police station. The new police station comes at the recommendation of the citizen's Needs Analysis Task Force, created to advise the City Council on the facilities' needs, and is one of the recommendations of the Government Center Needs Analysis Report, developed by Bond Architects in 2014.



The Needs Analysis highlighted many concerns with the Police Department facility regarding safety and security. These include:

Emergency vehicle access and egress: The Police Department's current facility, which it shares with the Government Center and Community Center, has only one entrance and exit. Emergency vehicles often encounter conflict with pedestrian and vehicular traffic when trying to respond to incidents. Not only does this create a hazardous situation, it can also delay emergency response.

Unsecured emergency exits: Building and fire codes require exit points for the public during an emergency, however, many of

the current facilities' exit points take the public through areas that should be restricted, such as the hallway leading to the boiler room, cooling tower and generator.

Jail cell conflicts: State law requires sight and sound separation between juvenile and adult detainees. The current facility lacks space for a dedicated juvenile holding area, so to comply with state law, adult detainees must be removed when juvenile detainees are brought into the facility.

In addition to safety and security concerns, the Needs Analysis Report also highlights concerns with space and overcrowding. The current facility was originally designed as a school and does not provide an efficient layout for a police department headquarters. Though the Police Department employees work as a team, their offices are spread across three different areas throughout the building, creating a disjointed work environment. The facility also lacks adequate storage and training space. The new police facility creates a plan for the future and would allow the current city offices to expand and remodel once the police department moves out.

Continues on page 7

Smoking Ordinance Extended to Outdoor Seating

City Council passed an amendment to Article II Chapter 215 of the Code of Ordinances regarding smoking in public places at their meeting on Monday, June 27. The amendment extends smoking restrictions to restaurant outdoor seating as well as seating areas or service lines in which the public is invited or permitted, effective immediately.

The Code of Ordinances previously banned smoking within 15 feet of the entry to any place of employment, including restaurants. The smoking ordinance does not apply to people walking past prohibited areas along a route open

to the public. Private residences not serving as places of employment or public places are excluded from the smoking ban. Smoking shelters are expressly permitted.

"The health risks related to secondhand smoke exposure are well documented," said Ward 3 Council Member Dr. Robert Hoffman. "This amendment will further improve the safety and health of Creve Coeur residents and visitors."

For more information, visit www.creve-coeur.org/smokingban or contact Debbie Ryan, City Clerk, at (314) 872-2517.

This Issue

Page 2
Mayor's Column
Elected Officials
Holiday Trash Schedule
Page 3
Council Corner
Comprehensive Plan Update
Ward 1 Town Hall Meeting
Page 4-5
Beautification Award Winners
Butterfly Street Banners
Council Activities
Page 6
Recreation
Planning Updates
Page 7
Silver Screen Series
Crime Prevention Classes
Page 8
City Calendar
Limb Chipping Program
Art Opening



Police Facility Improvements, *Continued from page 1*

Addressing these concerns is not only important for improving efficiency and maintaining community safety, but they are also important for the department to maintain accreditation. The citizens of Creve Coeur are served by an internationally accredited law enforcement agency certified by the Commission on Accreditation for Law Enforcement Agencies (CALEA). To maintain accreditation, they must meet certain safety standards. While the department currently meets all standards, should the criteria be revised, remaining in the current building could make it more difficult for the department to maintain accreditation.

“The men and women of the Creve Coeur Police Department are dedicated to providing the highest quality of service to all citizens and to maintaining a safe community,” said Captain Tim Koncki. “A new police station would provide improved training facilities, increased building security and enhanced workflow and efficiency to help our department continue to provide our residents with excellent service.”

Security and overcrowding are examples of some of the many concerns included in the Facilities Needs Analysis. Other concerns include lack of a dedicated Emergency Operation Center, extensive plumbing deficiencies, and unsafe parking configuration.

The estimated cost of the new police station, including all site work, is approximately \$10 million. If voters approve the bond issue, the tax levy would be approximately \$0.085 per \$100 assessed valuation based on current interest rates. The average home with a market value of \$400,000 would see an estimated increase of \$64.60 annually in property taxes.

More information on the police and Government Center facilities’ needs, including the complete Government Center Needs Analysis, is available at www.creve-coeur.org/cityfacilities. Citizens can provide comments or ask questions through the city’s web page as well. For more information, contact Mark Perkins, City Administrator, at mperkins@crevecoeurmo.gov or (314) 872-2511.

Silver Screen Series Returns

Mark your calendars for the Silver Screen Series, a film series focusing on positive aging themes. Each viewing concludes with an optional discussion. All screenings are held at AMC Creve Coeur 12, 10465 Olive Boulevard from 1:00 to 4:00 p.m. on Mondays in September. Doors open at 12:30 p.m., and admission is free. The schedule is as follows:

September 12: August: Osage County

Discussant: Sun Smith-Forét, artist and practicing psychotherapist

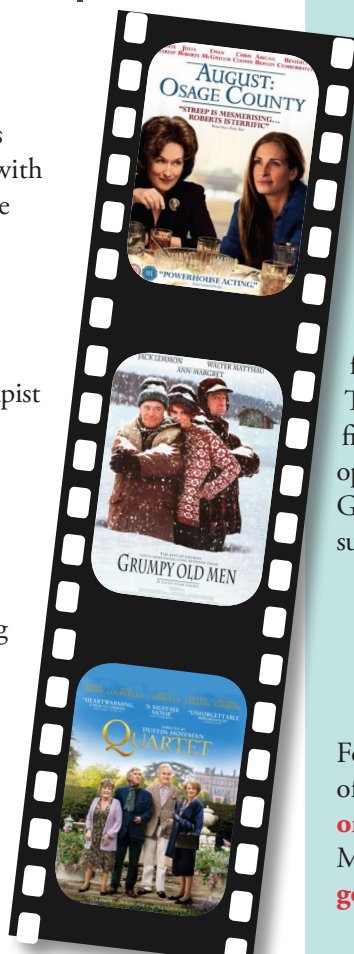
September 19: Grumpy Old Men

Discussant: Ellen Futterman, Editor of the St. Louis Jewish Light and former reporter, columnist, critic and Arts and Entertainment editor for the St. Louis Post-Dispatch

September 26: Quartet

Discussant: Susan Fadem, veteran journalist, award-winning writer, author and host of her own movie salon group for 14 years

The Silver Screen Series is presented by the Creve Coeur Arts Committee along with Maturity and Its Muse. For more information, please contact Bess McCoy, Public Information Officer and Management Analyst, at bmccoy@crevecoeurmo.gov or (314) 442-2081.



Crime Prevention Classes

Multi-purpose room, 300 N. New Ballas Road

Personal Safety Class

There will be another Personal Safety Presentation offered by the Police Department in conjunction with Creve Coeur Neighborhood Watch Association. This class will offer tips on how to make yourself a “hard target” to criminals while traveling, shopping or walking in the park. There will also be up-to-date crime statistics and an opportunity to speak with an officer one-on-one.

Tuesday, August 9, 7:00 – 8:30 p.m.

Active Shooter Defense Class

The Police Department and the Creve Coeur Neighborhood Watch Association are offering a free Active Shooter Defense Class. The class will discuss current active shooter statistics and trends, the “Run, Hide, Fight” methodology sanctioned by the Department of Homeland Security, and measures to reduce the effectiveness of an active shooter. This lecture-based class will not include any hands-on training.

Thursday, August 25, 7:00 – 8:30 p.m.

Advanced Citizen Police Academy

This four-week academy will meet every Tuesday night at different locations. Topics to be covered include K-9 police officers, computer crimes, Major Case Squad, and Metro Air Support. The academy is open to all graduates of the West County Basic Citizen Police Academy class of any year. A criminal background check of all applicants will be completed, and a waiver must be signed.

Tuesdays, September 6-27, 7:00 – 9:00 p.m.

Basic CERT Training

Community Emergency Response Team (CERT) training teaches residents useful skills for responding to a disaster or emergency. This seven-week course covers topics including fire protocol, search and rescue, medical operations/first aid and disaster psychology. Graduates receive basic disaster response supplies and a certificate.

Wednesdays, October 5 - November 16
6:30 – 9:00 p.m.

Concludes with a mock disaster drill on Saturday, November 19

For more information or to register for any of the above events, visit www.creve-coeur.org/policeevents or contact Officer Doug Manninger at dmanninger@crevecoeurmo.gov or (314) 442-2075.